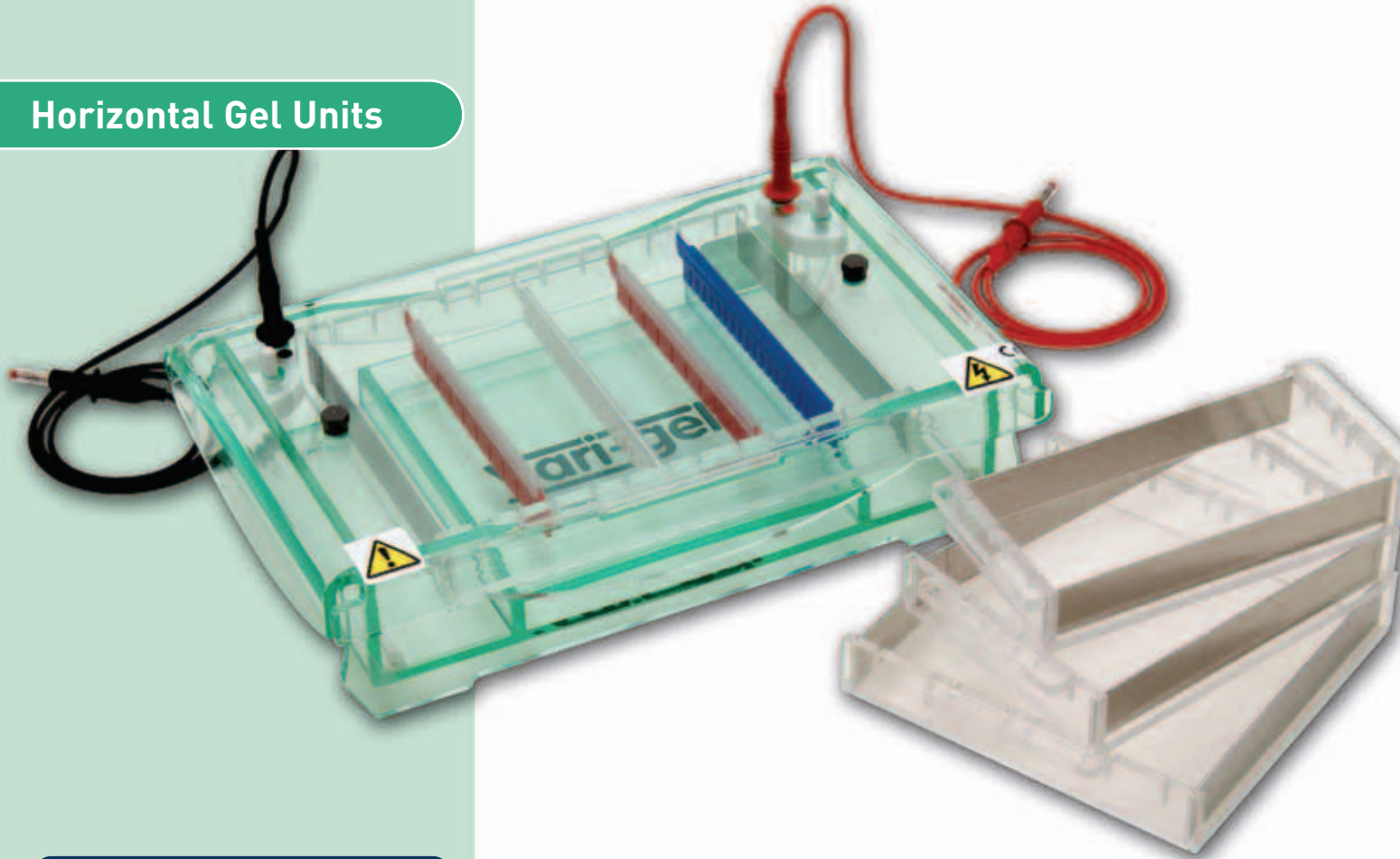


## Horizontal Gel Units



### BENEFITS INCLUDE

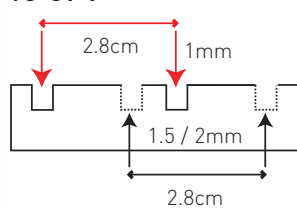
- **Four gel trays** - in 15 x 7, 15 x 10, 15 x 15 and 15 x 20cm (W x L) sizes, each with aluminium casting gates
- **Multiple comb slots** - regularly positioned along the gel tray and corresponding to each comb thickness - allow the user to adjust the sample migration distance according to their own personal preference
- **Colour-coded combs** - 1, 1.5 and 2mm thick
- **Buffer recirculation ports** - may be connected to a peristaltic pump for buffer recirculation during electrophoresis to maintain buffer pH and prevent ionic gradient formation
- **Coloured loading strips** - for easy well detection when loading
- **Compact tank** - reduces the buffer volume required to cover the gel, providing greater control over the voltage gradient and run-time
- **UV-transparent acrylic casting tray** - allows the user to image the gel without risk of damage due to handling
- **Scie-Plas Super-Seals** - available as an accessory for flexible casting

## VG-SYS Vari-gel MAXI System

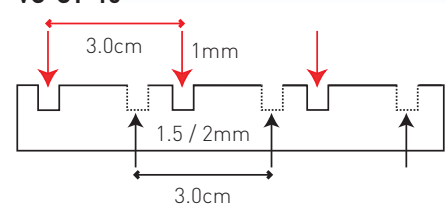
The VG-SYS Vari-gel maxi system is ideal for standard preparatory and analytical electrophoresis techniques.

**Migration distances between comb slots, for either 1mm or 1.5 and 2mm combs, in the VG-SYS gel-casting trays**

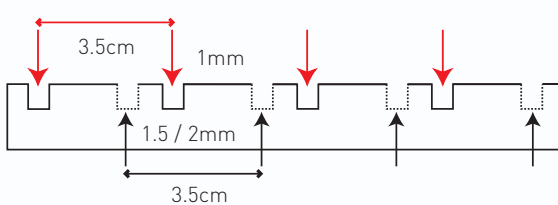
**VG-GT-7**



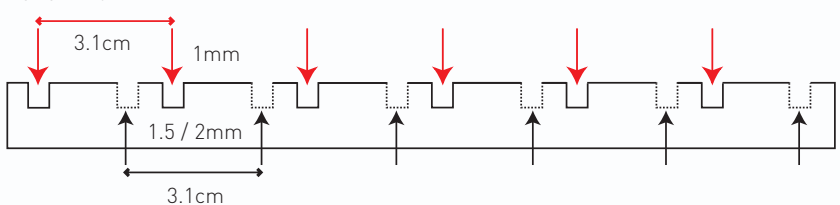
**VG-GT-10**



**VG-GT-15**



**VG-GT-20**



## ORDERING INFORMATION

### Complete System

A complete 15cm wide Vari-gel system with 4 removable gel trays, 15 x 7, 15 x 10, 15 x 15 and 15 x 20cm (W x L); 2 x 1mm, 15-sample combs; aluminium casting gates and coloured loading strips

### Part No.

VG-SYS

### Replacement Parts & Accessories

1 x gel casting tray, 15 x 7cm, including aluminium casting gates	VG-GT-7
1 x gel casting tray, 15 x 10cm, including aluminium casting gates	VG-GT-10
1 x gel casting tray, 15 x 15cm, including aluminium casting gates	VG-GT-15
1 x gel casting tray, 15 x 20cm, including aluminium casting gates	VG-GT-20
2 x buffer recirculation ports	HU-BRP
2 x aluminium casting gates	VG-GT-ALCG
2 x Scie-Plas Super-Seals	VG-SS
12 x coloured loading strips	VG-CS
1 x gel scoop	VG-GS
2 x 0.2mm thick, platinum electrode wire	PT-0.2
2 x 1 metre power leads with shrouded 4mm power output connectors	CABLE-4

### VG-SYS Combs

Part No.	Thickness (mm)	Sample Throughput	Tooth Width (mm)	Max. Spacing (mm)	Sample Volume in a 5mm Deep Well (µl)
VG-C1-10	1	10	12.8	2	64
*VG-C1-16MC	1	16	6.4	2	32
VG-C1-20	1	20	5.9	2	29
VG-C1-25	1	25	3.5	2	17
*VG-C1-30MC	1	30	2.5	2	12
VG-C1.5-10	1.5	10	12.8	2	96
*VG-C1.5-16MC	1.5	16	6.4	2	48
VG-C1.5-20	1.5	20	5.9	2	43
VG-C1.5-25	1.5	25	3.5	2	25
*VG-C1.5-30MC	1.5	30	2.5	2	18
VG-C2-10	2	10	12.8	2	128
VG-C2-16MC	2	16	6.4	2	64
VG-C2-20	2	20	5.9	2	58
VG-C2-25	2	25	3.5	2	34
*VG-C2-30MC	2	30	2.5	2	24

\*Multi-channel pipette compatible

### TRAY OPTIONS

Part No.	Tray 1 VG-GT-7	Tray 2 VG-GT-10	Tray 3 VG-GT-15	Tray 4 VG-GT-20
Gel Size (W x L)	15 x 7cm	15 x 10cm	15 x 15cm	15 x 20cm
Combs Slots	4 (2 slots for 1mm combs; 2 slots for 1.5 and 2mm combs)	6 (3 slots for 1mm combs; 3 slots for 1.5 and 2mm combs)	8 (4 slots for 1mm combs; 4 slots for 1.5 and 2mm combs)	12 (6 slots for 1mm combs; 6 slots for 1.5 and 2mm combs)
Migration Distance Between Comb Slots	2.8cm	3.0cm	3.5cm	3.1cm
Maximum Sample Capacity	60	90	120	180

\*each tray includes 2 x aluminium casting gates

## TECHNICAL SPECIFICATION

Unit Dimensions (W x L x H)	31.5 x 19 x 7cm
Gel Size (W x L)	see Trays
Buffer Volume	950ml
Buffer Recirculation Ports	2
Maximum Sample Capacity	180
Combs	2
Comb Thickness	1, 1.5 or 2mm
Comb Throughput	10 to 30 samples
Recommended Running Voltage	75 to 150V
Power Output Connectors (diameter)	Shrouded, 4mm
Recommended Power Supply	Consort EV243



**ELECTROPHORESIS  
CHEMICALS  
SEE PAGES 117-123**